

AIR INLET

HUMIDITY-CONTROLLED, ACOUSTIC

Wall vent for Ø 100 or 125 mm holes

anjos
inspirer le bien-être



EM HY

5/45 m³/h



CERTIFIED

ACOUSTIC

CIRCULAR HOLE

www.anjos.com

EM HY

Used in MEV systems type Hygro B (Atech ALIZÉ 2018), the window inlet EM HY is used in association with humidity-controlled and temporized exhaust valves.



IMPORTANT



- Sound attenuation (external wall): 30 dB(A) (**EM HY 125**) to 35 dB(A) (**EM HY100**)
- The air inlet and grille fit in externally or internally insulated walls
- Hole diameters: 100 or 125 mm
- Made of white polystyrene

VENTILATION HYGRORÉGLABLE



PRESENTATION

EM HY indoor air vents ensure a variable flow rate of 5 to 45 m³/h depending on room humidity levels and for a 20 Pa pressure difference.

Acoustic performance for 30 dB sound attenuation (external wall):

Acoustic performance: $D_{n,e,w} + C_{tr} \geq 39$ dB, required if the square meterage of a room divided by the number of air inlets is less than 10 m².

OUTDOORS

EM HY



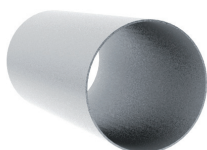
Humidity-controlled air inlet: Ø 100 (**EM HY 100**) or Ø 125 (**EM HY 125**).

Made of white polystyrene.

Flow rate: 5 to 45 m³/h

L. (mm)	H. (mm)	Thk. (mm)
220	150	52

MMM



Metal sleeve: Ø 100 (**MMM 100**), or Ø 125 mm (**MMM 125**). Length: 300 mm.

L. (mm)	Diameter Ø
300	100 or 125

INDOORS

GAP



External grille: Ø 100 (**GAP 100**) or Ø 125 (**GAP 125**).

Made of UV-resistant and weather-resistant white polystyrene.

L. (mm)	H. (mm)	Thk. (mm)
150	150	20

For sound attenuation greater than 35 dB (external wall), refer to the Anjos's documentation on the SC silencer.

INSTALLATION

Drill a hole in the wall with a slight outward slope. Insert the 100 mm (ID: 100 mm max/97 mm min) or 125 (ID: 125 mm max/122 mm min) sleeve and apply caulking around the circumference of the sleeve. Outdoors, once the wall coating is finished, screw on the

GAP grille adapter and clip the grille onto the outdoor end of the sleeve.

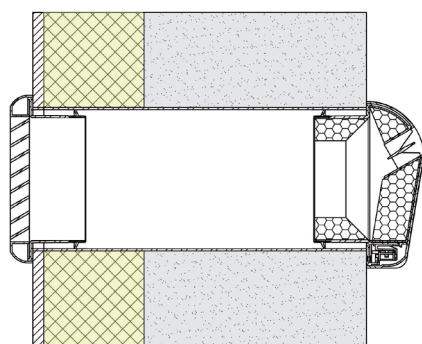
Insert the air inlet into the indoor side of the sleeve. The inlet is held in place by an airtight lip seal.



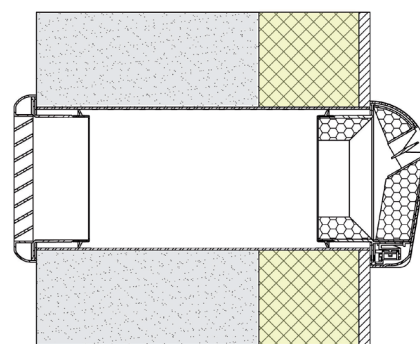
- ① EM HY
- ② MMM
- ③ GAP

INSTALLATION EXAMPLES

Installation example: 300 mm wall and Ø 125 mm hole



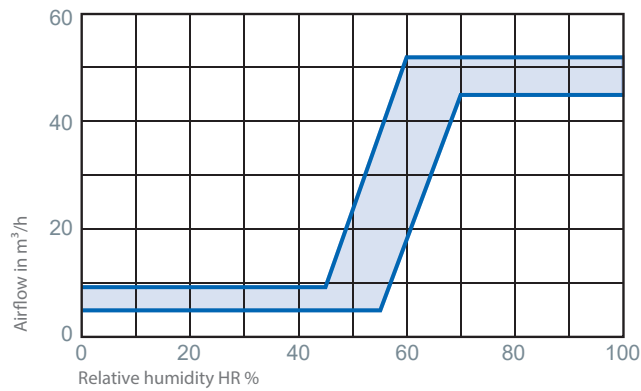
External insulation



Internal insulation

CHARACTERISTICS

AIR FLOW

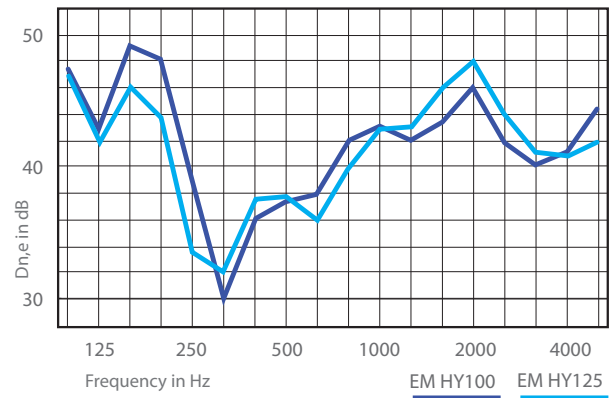


The curve opposite shows the nominal air characteristics as a function of humidity level of the indoor air and for a 20 Pa pressure difference.

ACOUSTIC

Air inlets are characterised by their acoustic performance $D_{n,e,w}(Ctr)$.

Type	$D_{n,e,w}(C)$	$D_{n,e,w}(Ctr)$
EM HY 100 + GAP grille 100	40 dB	39 dB
EM HY 125 + GAP grille 125	40 dB	39 dB



TEST REPORTS

Technical Opinion on humidity-controlled MEV systems.

PRODUCT CODES

Description	Code
EM HY 100	2201
EM HY 125	2202
Metal sleeve MMM 100 – Ø 100, L: 300 mm	2210
Metal sleeve MMM 125 – Ø 125, L: 300 mm	2212

Description	Code
External grille Ø 100 GAP 100	2204
External grille Ø 125 GAP 125	2205