

# INSULATED ROOF TERMINAL

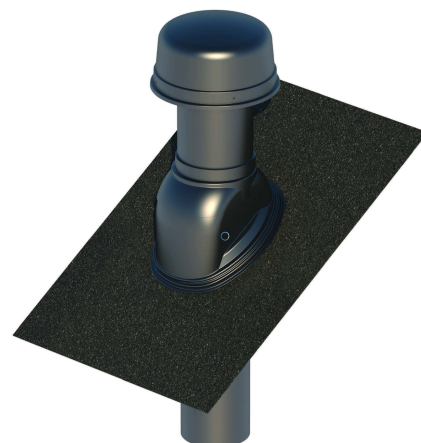
For 180 mm systems



## Introduction

The insulated terminals complete Ubbink's portfolio of insulated ductwork for ventilation systems with heat recovery in residential and small commercial buildings. With various adaptors and a complete range of accessories the terminals can be connected to any market-standard ventilation system.

- They can be used for tiles and slates
- Insulated through the cowl
- can be applied on pitched roofs from 15° to 55°



## Technical details

Product specification	Insulated roof terminal for mechanical ventilation in residential and small commercial buildings
Diameter	180mm (with adaptor)
Type of connection	Socket-Spigot
Available colours	Black
Weather resistance	All conditions (including UV)
<b>Materials</b>	
Terminal	PP
Insulation	EPS
Cap	ABS
<b>Adaptors</b>	
180mm	179/180mm
<b>Accessories</b>	
Mounting bracket	
Airtight seals	
Multiple aluminum flange plates for flat roof application	
Lead-free flashing tiles for pitched roof applications	
<b>Other</b>	
BIM ready?	Yes

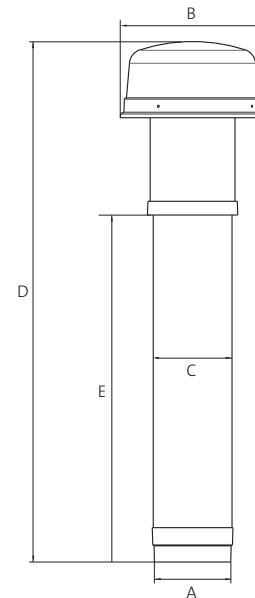


# INSULATED ROOF TERMINAL

For 180 mm systems

## Technical details

Dimensions	180
A [mm]	179
B [mm]	341
C [mm]	186
D [mm]	1227
E [mm]	819



## Air supply

Diameter [mm]	180
Qv (Volume) [m <sup>3</sup> /h]	$\Delta p$ (Pressure loss) [Pa]
50	0,2
100	0,8
150	1,8
200	3,3
250	5,1
300	7,4
350	10,0
400	13,0
450	16,6
500	20,5

## Air extract

Diameter [mm]	180
Qv (Volume) [m <sup>3</sup> /h]	$\Delta p$ (Pressure loss) [Pa]
50	0,3
100	1,0
150	2,2
200	3,8
250	6,0
300	8,6
350	11,7
400	15,3
450	19,4
500	24,1

